

Municipal Park

Warwick City Park

Warwick, RI

Profile

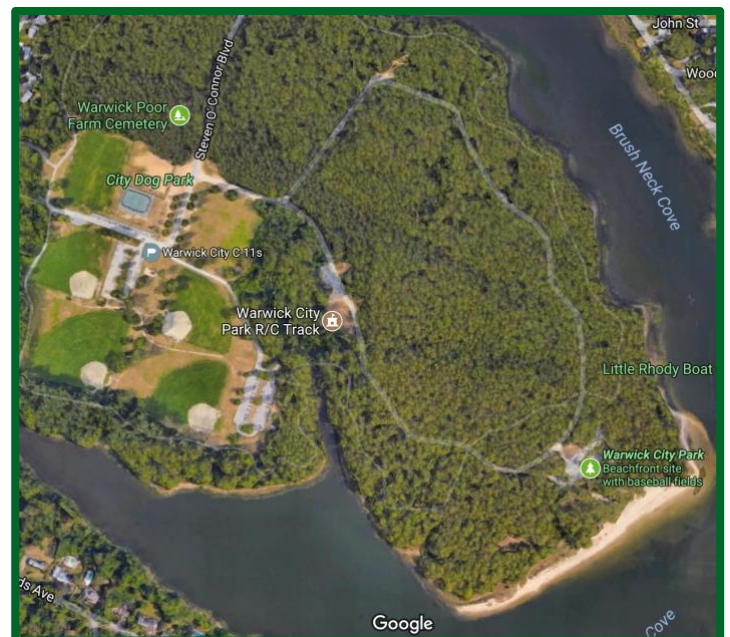
- 3-mile walking/biking path
- Playground
- Beach
- Platform hockey rink
- Dog Park
- Baseball and soccer fields

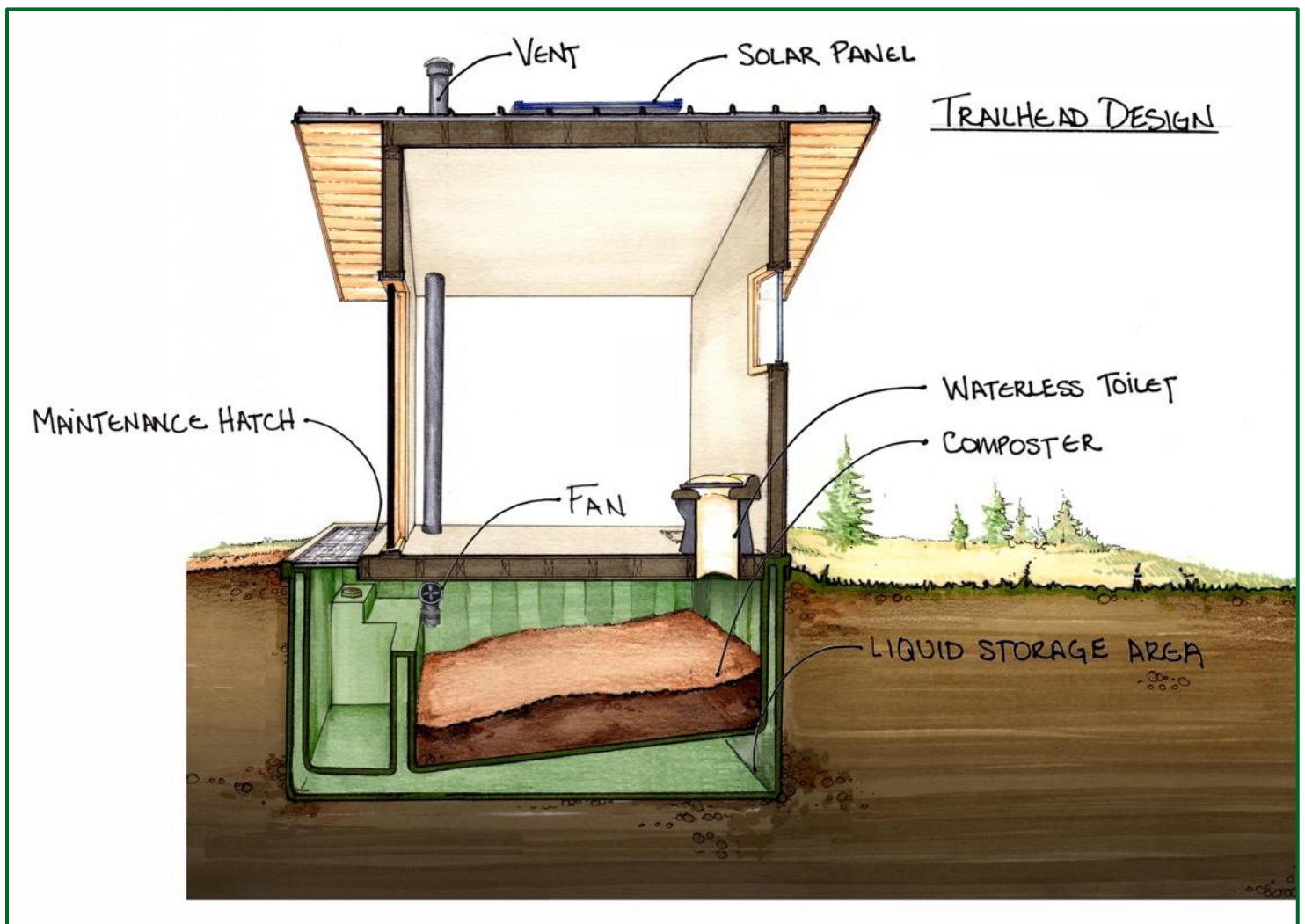
Challenge

- Encourage extended outdoor activity
- Provide safe, sanitary restrooms
- No water, sewer, or septic on site
- Preserve landscape and minimize site disruption
- Reduce use of "portable potties" and chemical toilets

Solution

- Eliminated sewage altogether
- Designed to save over 100,000 gallons of water per year
- Waterless, self-contained system is zero-discharge
- Site disturbance contained to footprint of buildings
- Model C-11 restroom is ADA compliant and solar powered
- Made possible through grant from RI DEM





All Clivus systems are NSF Standard 41 Tested and Certified

The Clivus Model C-11 trailhead restroom is a heavy duty building with a self-contained composting waste treatment system. There is no discharge of waste or pollution, site disturbance is limited to the footprint of the building, and the ventilation can be operated with solar power if necessary.

These units are all ADA accessible and can be placed in remote areas.



clivus new england
incorporated