

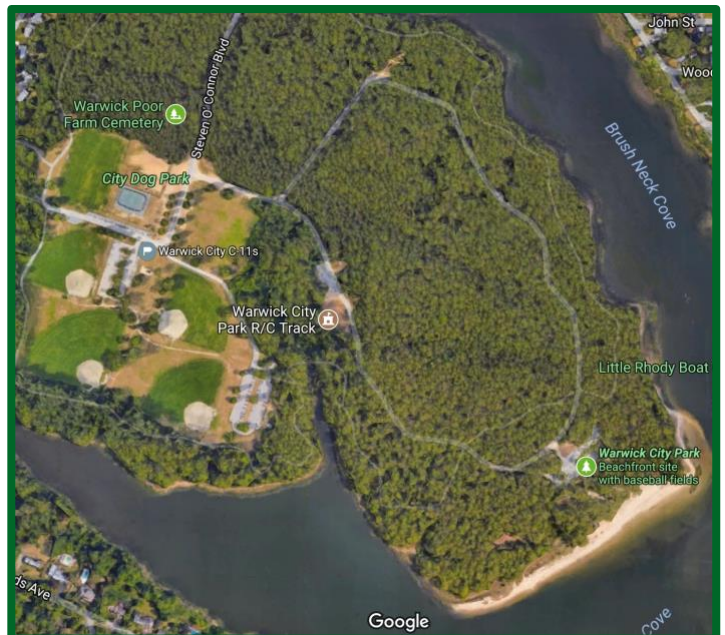
Warwick City Park

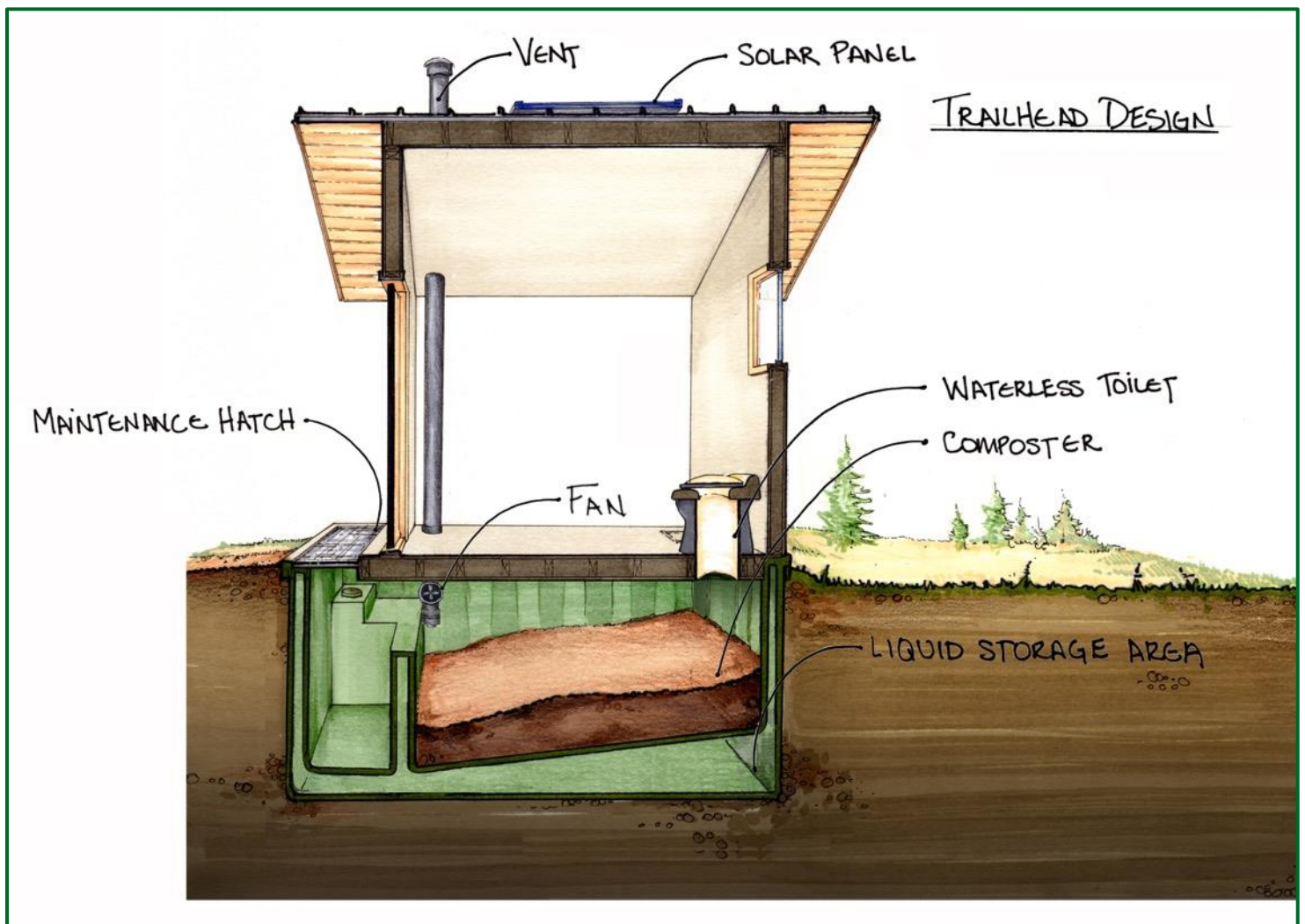
Profile

- ## Challenge

- ## Solution

- Eliminated sewage altogether
- Designed to save over 100,000 gallons of water per year
- Waterless, self-contained system is zero-discharge
- Site disturbance contained to footprint of buildings
- Model C-11 restroom is ADA compliant and solar powered
- Made possible through grant from RI DEM





All Clivus systems are NSF Standard 41 Tested and Certified

The Clivus Model C-11 trailhead restroom is a heavy duty building with a self-contained composting waste treatment system. There is no discharge of waste or pollution, site disturbance is limited to the footprint of the building, and the ventilation can be operated with solar power if necessary.

These units are all ADA accessible and can be placed in remote areas.

